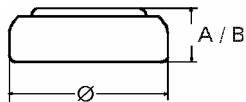


Data Sheet

Type Number 397
Designation IEC SR 59
System Silver oxide / Zinc /
 NaOH - Electrolyte



Nominal Voltage 1,55 V
Typical Capacity C 23 mAh
 Load 20 kOhm, at 20 °C down to 1.2 V

Weight (approx.) 0,5 g
Volume 0,11 ccm
Coding..... Date of Manufacturing
 Month/Year

Temperature Ranges

Storage	min	max.
Discharge	-10 °C	65 °C
	-10 °C	65 °C

Dimensions

Diameter (Ø)	min	max.
Height (A/B)	7,55	7,9
	2,3	2,6

Segment
 Watch

Main Applications
 Watch
 Photo
 Electronic

Typical Capacities (at 20 °C)

Discharge Type	Load	End Voltage:	1.2 V
Continuous 24h/d, 7d/w Current [µA]:	20000 Ω 78	Time:	320 h
		Capacity [mAh]:	23
		Energy [mWh]:	33

All Data contained herein is for single cells

For battery applications, performance data may vary from single cell data, depending on specific battery configuration

VARTA Microbattery GmbH, Daimlerstr. 1, D-73479 Ellwangen/Jagst
 Tel.: (+49) 7961/921-0, Telefax: (+49) 7961/921-553

Subject to change without prior notice!
 Date of issue: 2009-12-01