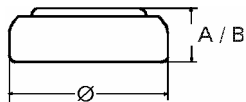


Data Sheet

Type Number 396
Designation IEC SR 59
System Silver oxide / Zinc /
 KOH - Electrolyte



Nominal Voltage 1,55 V
Typical Capacity C 28 mAh
 Load 20 kOhm, at 20 °C down to 1.2 V

Weight (approx.) 0,55 g
Volume 0,11 ccm
Coding..... Date of Manufacturing
 Month/Year

Temperature Ranges min max.
 Storage -10 °C 65 °C
 Discharge -10 °C 65 °C

Dimensions min max.
 Diameter (Ø) 7,55 7,9
 Height (A/B) 2,3 2,6

Segment Watch / High Drain

Main Applications Watch
 Photo
 Electronic

Typical Capacities (at 20 °C)

| Discharge Type | Load | End Voltage: | 1.2 V |
|---|-------------------|-----------------|-------|
| Continuous 24h/d,7d/w Current [µA]: | 20000 Ω 78 | Time: | 350 h |
| | | Capacity [mAh]: | 28 |
| | | Energy [mWh]: | 42 |