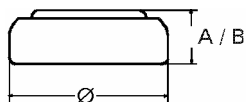


Data Sheet

Type Number 395
Designation IEC SR 57
System Silver oxide / Zinc /
 NaOH - Electrolyte



Nominal Voltage 1,55 V
Typical Capacity C 44 mAh
 Load 13 kOhm, at 20 °C down to 1.2 V

Weight (approx.) 0,75 g
Volume 0,17 ccm
Coding..... Date of Manufacturing
 Month/Year

Temperature Ranges min max.
 Storage -10 °C 65 °C
 Discharge -10 °C 65 °C

Dimensions min max.
 Diameter (Ø) 9,15 9,50
 Height (A/B) 2,4 2,7

Segment Watch / High Drain

Main Applications Watch
 Photo
 Electronic

Typical Capacities (at 20 °C)

Discharge Type	Load	End Voltage:	1.2 V
Continuous 24h/d,7d/w Current [µA]:	13000 Ω	Time:	375 h
		Capacity [mAh]:	42
	120	Energy [mWh]:	67