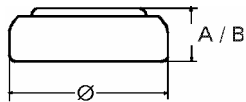


Data Sheet

Type Number 394
Designation IEC SR 45
System Silver oxide / Zinc /
 NaOH - Electrolyte



Nominal Voltage 1,55 V
Typical Capacity C 64 mAh
 Load 13 kOhm, at 20°C down to 1.2 V

Weight (approx.) 1,04 g
Volume 0,24 ccm
Coding..... Date of Manufacturing
 Month/Year

Temperature Ranges

Storage	min	max.
Discharge	-10°C	65°C
	-10°C	65°C

Dimensions

Diameter (Ø)	min	max.
Height (A/B)	9,5	9,3
	3,3	3,6

Segment Watch

Main Applications
 Watch
 Photo
 Electronic

Typical Capacities (at 20°C)

Discharge Type	Load	End Voltage:	1.2 V
Continuous 24h/d,7d/w Current [µA]:	13000 Ω 120	Time:	540 h
		Capacity [mAh]:	64
		Energy [mWh]:	100

All Data contained herein is for single cells

For battery applications, performance data may vary from single cell data, depending on specific battery configuration

VARTA Microbattery GmbH, Daimlerstr. 1, D-73479 Ellwangen/Jagst
 Tel.: (+49) 7961/921-0, Telefax: (+49) 7961/921-553

Subject to change without prior notice!
 Date of issue: 2009-12-01