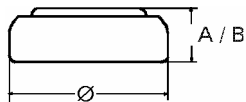


## Data Sheet

**Type Number** ..... 393  
**Designation IEC** ..... SR 48  
**System** ..... Silver oxide / Zinc /  
 KOH - Electrolyte



**Nominal Voltage** ..... 1,55 V  
**Typical Capacity C** ..... 75 mAh  
 Load 13 kOhm, at 20 °C down to 1.2 V

**Weight (approx.)** ..... 1,08 g  
**Volume** ..... 0,24 ccm  
**Coding**..... Date of Manufacturing  
 Month/Year

**Temperature Ranges** min max.  
 Storage ..... -10 °C 65 °C  
 Discharge ..... -10 °C 65 °C

**Dimensions** min max.  
 Diameter (Ø) ..... 7,55 7,9  
 Height (A/B) ..... 5,0 5,4

**Segment** ..... Watch / High Drain

**Main Applications** ..... Watch  
 Photo  
 Electronic

### Typical Capacities (at 20 °C)

Discharge Type	Load	End Voltage:	1.2 V
Continuous 24h/d,7d/w Current [µA]:	13000 Ω  120	Time:	615 h
		Capacity [mAh]:	75
		Energy [mWh]:	115