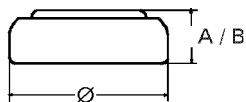


Data Sheet

Type Number 390
Designation IEC SR54
System Silver oxide / Zinc /
 NaOH - Electrolyte



Nominal Voltage 1,55 V
Typical Capacity C 60 mAh
 Load 5.6 kOhm, at 20°C down to 1.2 V

Weight (approx.) 1,32 g
Volume 0,28 ccm
Coding..... Date of Manufacturing
 Month/Year

Temperature Ranges min max.
 Storage -10°C 65°C
 Discharge -10°C 65°C

Dimensions min max.
 Diameter (Ø) 11,25 11,60
 Height (A/B) 2,75 3,05

Segment Watch
Main Applications Watch
 Photo
 Electronic

Typical Capacities (at 20°C)

Discharge Type	Load	End Voltage:	1.2 V
Continuous 24h/d,7d/w Current [µA]:	5600 Ω 40	Time:	220 h
		Capacity [mAh]:	60
		Energy [mWh]:	93

All Data contained herein is for single cells

For battery applications, performance data may vary from single cell data, depending on specific battery configuration

VARTA Microbattery GmbH, Daimlerstr. 1, D-73479 Ellwangen/Jagst
 Tel.: (+49) 7961/921-0, Telefax: (+49) 7961/921-553

Subject to change without prior notice!
 Date of issue: 2009-12-01