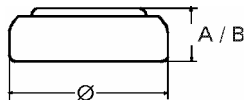


## Data Sheet

**Type Number** ..... 384  
**Designation IEC** ..... SR 41  
**System** ..... Silver oxide / Zinc /  
 NaOH - Electrolyte



**Nominal Voltage** ..... 1,55 V  
**Typical Capacity C** ..... 38 mAh  
 Load 13 kOhm, at 20°C down to 1.2 V

**Weight (approx.)** ..... 0,69 g  
**Volume** ..... 0,16 ccm  
**Coding**..... Date of Manufacturing  
 Month/Year

**Temperature Ranges** min max.  
 Storage ..... -10°C 65°C  
 Discharge ..... -10°C 65°C

**Dimensions** min max.  
 Diameter (Ø)..... 7,55 7,9  
 Height (A/B) ..... 3,3 3,6

**Segment** ..... Photo

**Main Applications** ..... Watch  
 Photo  
 Electronic

### Typical Capacities (at 20°C)

Discharge Type	Load	End Voltage:	1.2 V
Continuous	13000 Ω	Time:	330 h
24h/d,7d/w		Capacity [mAh]:	38
Current [μA]:	120	Energy [mWh]:	55