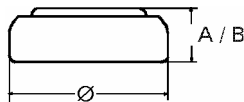


## Data Sheet

**Type Number** ..... 373  
**Designation IEC** ..... SR 68  
**System** ..... Silver oxide / Zinc /  
 Alkaline - Electrolyte



**Nominal Voltage** ..... 1,55 V  
**Typical Capacity C** ..... 29 mAh  
 Load 47 kOhm, at 20 °C down to 1.2 V

**Weight (approx.)** ..... 0,5 g  
**Volume** ..... 0,12 ccm  
**Coding**..... Date of Manufacturing  
 Month/Year

**Temperature Ranges** min max.  
 Storage ..... 0 °C 60 °C  
 Discharge ..... 0 °C 60 °C

**Dimensions** min max.  
 Diameter (Ø)..... 9,35 9,5  
 Height (A/B) ..... 1,47 1,65

**Segment** ..... Watch

**Main Applications** ..... Watch  
 Photo  
 Electronic

### Typical Capacities (at 20 °C)

Discharge Type	Load	End Voltage:	1.2 V
Continuous 24h/d,7d/w Current [µA]:	47000 Ω  33	Time:	850 h
		Capacity [mAh]:	29
		Energy [mWh]:	45