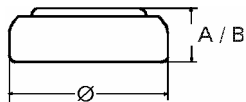


Data Sheet

Type Number 370
Designation IEC SR 69
System Silver oxide / Zinc /
 KOH - Electrolyte



Nominal Voltage 1,55 V
Typical Capacity C 34 mAh
 Load 20 kOhm, at 20 °C down to 1.2 V

Weight (approx.) 0,6 g
Volume 0,14 ccm
Coding..... Date of Manufacturing
 Month/Year

Temperature Ranges min max.
 Storage -10 °C 65 °C
 Discharge -10 °C 65 °C

Dimensions min max.
 Diameter (Ø)..... 9,3 9,5
 Height (A/B) 1,8 2,1

Segment Watch / High Drain

Main Applications Watch
 Photo
 Electronic

Typical Capacities (at 20 °C)

Discharge Type	Load	End Voltage:	1.2 V
Continuous	20000 Ω	Time:	430 h
24h/d,7d/w		Capacity [mAh]:	34
Current [μA]:	78	Energy [mWh]:	54