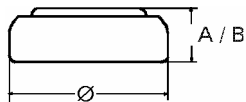


## Data Sheet

**Type Number** ..... 341  
**Designation IEC** ..... ---  
**System** ..... Silver oxide / Zinc / Alkaline - Electrolyte



**Nominal Voltage** ..... 1,55 V  
**Typical Capacity C** ..... 15 mAh  
 Load 68,1 kOhm, at 20°C down to 1.2 V

**Weight (approx.)** ..... 0,28 g  
**Volume** ..... 0,07 ccm  
**Coding**..... Date of Manufacturing Month/Year

**Temperature Ranges**

	min	max.
Storage .....	0°C	60°C
Discharge .....	0°C	60°C

**Dimensions**

	min	max.
Diameter (Ø).....	7,75	7,90
Height (A/B) .....	1,3	1,45

**Segment** ..... Watch

**Main Applications** ..... Watch  
 Photo  
 Electronic Devices

### Typical Capacities (at 20°C)

Discharge Type	Load	End Voltage:	1.2 V
Continuous 24h/d,7d/w Current [µA]:	68100 Ω	Time:	650 h
		Capacity [mAh]:	15
	23	Energy [mWh]:	23,5