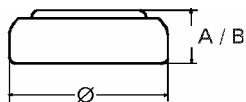


Data Sheet

Type Number 337
Designation IEC SR 416 SW
System Silver oxide / Zinc /
 NaOH - Electrolyte



Nominal Voltage 1,55 V
Typical Capacity C 8 mAh
 Load 68,1 kOhm, at 20°C down to 1.3 V

Weight (approx.) 0,13 g
Volume
Coding..... Date of Manufacturing
 Month/Year

Temperature Ranges min max.
 Storage -10°C 65°C
 Discharge -10°C 65°C

Dimensions min max.
 Diameter (Ø)..... 4,55 4,80
 Height (A/B) 1,45 1,65

Segment Watch

Main Applications Watch
 Electronic Devices

Typical Capacities (at 20°C)

Discharge Type	Load	End Voltage:	1.3 V
Continuous 24h/d, 7d/w Current [µA]:	68100 Ω	Time:	355 h
		Capacity [mAh]:	8
	23	Energy [mWh]:	12,5