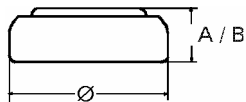


Data Sheet

Type Number 329
Designation IEC ---
System Silver oxide / Zinc /
 Alkaline - Electrolyte



Nominal Voltage 1,55 V
Typical Capacity C 37 mAh
 Load 25,5 kOhm, at 20°C down to 1.2 V

Weight (approx.) 0,6 g
Volume 0,15 ccm
Coding..... Date of Manufacturing
 Month/Year

Temperature Ranges min max.
 Storage 0°C 60°C
 Discharge 0°C 60°C

Dimensions min max.
 Diameter (Ø)..... 7,75 7,9
 Height (A/B) 2,85 3,1

Segment Watch

Main Applications Watch
 Photo
 Electronic

Typical Capacities (at 20°C)

Discharge Type	Load	End Voltage:	1.2 V
Continuous 24h/d,7d/w Current [µA]:	25500 Ω 61	Time:	600 h
		Capacity [mAh]:	37
		Energy [mWh]:	57