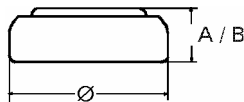


Data Sheet

Type Number 321
Designation IEC SR 65
System Silver oxide / Zinc /
 Alkaline - Electrolyte



Nominal Voltage 1,55 V
Typical Capacity C 14,5 mAh
 Load 68,1 kOhm, at 20°C down to 1.2 V

Weight (approx.) 0,25 g
Volume 0,06 ccm
Coding..... Date of Manufacturing
 Month/Year

Temperature Ranges min max.
 Storage 0°C 60°C
 Discharge 0°C 60°C

Dimensions min max.
 Diameter (Ø)..... 6,65 6,80
 Height (A/B) 1,47 1,65

Segment Watch

Main Applications Watch
 Electronic

Typical Capacities (at 20°C)

Discharge Type	Load	End Voltage:	1.2 V
Continuous 24h/d, 7d/w Current [µA]:	68100 Ω 23	Time:	630 h
		Capacity [mAh]:	14,5
		Energy [mWh]:	22,5