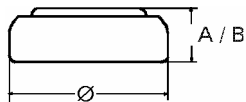


## Data Sheet

**Type Number** ..... 319  
**Designation IEC** ..... SR 64  
**System** ..... Silver oxide / Zinc /  
 Alkaline - Electrolyte



**Nominal Voltage** ..... 1,55 V  
**Typical Capacity C** ..... 21 mAh  
 Load 68,1 kOhm, at 20°C down to 1.2 V

**Weight (approx.)** ..... 0,29 g  
**Volume** ..... 0,07 ccm  
**Coding**..... Date of Manufacturing  
 Month/Year

**Temperature Ranges** min max.  
 Storage ..... 0°C 60°C  
 Discharge ..... 0°C 60°C

**Dimensions** min max.  
 Diameter (Ø)..... 5,65 5,80  
 Height (A/B) ..... 2,50 2,70

**Segment** ..... Watch

**Main Applications** ..... Watch  
 Photo  
 Electronic

### Typical Capacities (at 20 °C)

Discharge Type	Load	End Voltage:	1.2V
Continuous	68100 Ω	Time:	900 h
24h/d,7d/w		Capacity [mAh]:	21
Current [μA]:	22,9	Energy [mWh]:	33