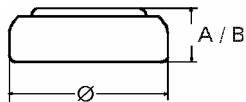


## Data Sheet

**Type Number** ..... 317  
**Designation IEC** ..... SR 62  
**System** ..... Silver oxide / Zinc /  
 Alkaline - Electrolyte



**Nominal Voltage** ..... 1,55 V  
**Typical Capacity C** ..... 10,5 mAh  
 Load 121 kOhm, at 20 °C down to 1.2 V

**Weight (approx.)** ..... 0,18 g  
**Volume** ..... 0,04 ccm  
**Coding**..... Date of Manufacturing  
 Month/Year

**Temperature Ranges** min max.  
 Storage ..... 0 °C 60 °C  
 Discharge ..... 0 °C 60 °C

**Dimensions** min max.  
 Diameter (Ø)..... 5,65 5,8  
 Height (A/B) ..... 1,47 1,6

**Segment** ..... Watch

**Main Applications** ..... Watch  
 Electronic

### Typical Capacities (at 20 °C)

Discharge Type	Load	End Voltage:	1.2 V
Continuous 24h/d,7d/w Current [µA]:	121000 Ω	Time:	800 h
		Capacity [mAh]:	10,5
		Energy [mWh]:	16

All Data contained herein is for single cells

For battery applications, performance data may vary from single cell data, depending on specific battery configuration

VARTA Microbattery GmbH, Daimlerstr. 1, D-73479 Ellwangen/Jagst  
 Tel.: (+49) 7961/921-0, Telefax: (+49) 7961/921-553

Subject to change without prior notice!  
 Date of issue: 2008-09-22