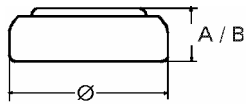


Data Sheet

Type Number 309
Designation IEC SR 48
System Silver oxide / Zinc /
 NaOH - Electrolyte



Nominal Voltage 1,55 V
Typical Capacity C 61 mAh
 Load 13 kOhm, at 20°C down to 1.2 V

Weight (approx.) 1,08 g
Volume 0,24 ccm
Coding..... Date of Manufacturing
 Month/Year

Temperature Ranges

	min	max.
Storage	-10°C	65°C
Discharge	-10°C	65°C

Dimensions

	min	max.
Diameter (Ø).....	7,55	7,9
Height (A/B)	5,0	5,4

Segment Watch

Main Applications Watch
 Photo
 Electronic

Typical Capacities (at 20°C)

Discharge Type	Load	End Voltage:	1.2 V
Continuous 24h/d,7d/w Current [µA]:	13000 Ω	Time:	520 h
	120	Capacity [mAh]:	61
		Energy [mWh]:	96