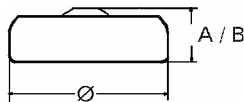


Data Sheet

Type Number 303
Designation IEC SR 44
System Silver oxide / Zinc /
 NaOH - Electrolyte



Nominal Voltage 1,55 V
Typical Capacity C 155 mAh
 Load 5,6 kOhm, at 20°C down to 1.2 V

Weight (approx.) 2,33 g
Volume 0,57 ccm
Coding..... Date of Manufacturing
 Month/Year

Temperature Ranges min max.
 Storage -10 °C 65 °C
 Discharge -10 °C 65 °C

Dimensions min max.
 Diameter (Ø)..... 11,25 11,60
 Height (A/B) 5,0 5,4
 Watch

Segment

Watch
 Photo
 Electronic

Main Applications

Typical Capacities (at 20 °C)

Discharge Type	Load	End Voltage:	1.2 V
Continuous 24h/d,7d/w Current [µA]:	5600 Ω 275	Time:	565 h
		Capacity [mAh]:	155
		Energy [mWh]:	240

All Data contained herein is for single cells

For battery applications, performance data may vary from single cell data, depending on specific battery configuration

VARTA Microbattery GmbH, Daimlerstr. 1, D-73479 Ellwangen/Jagst
 Tel.: (+49) 7961/921-0, Telefax: (+49) 7961/921-553

Subject to change without prior notice!
 Date of issue: 2009-12-01